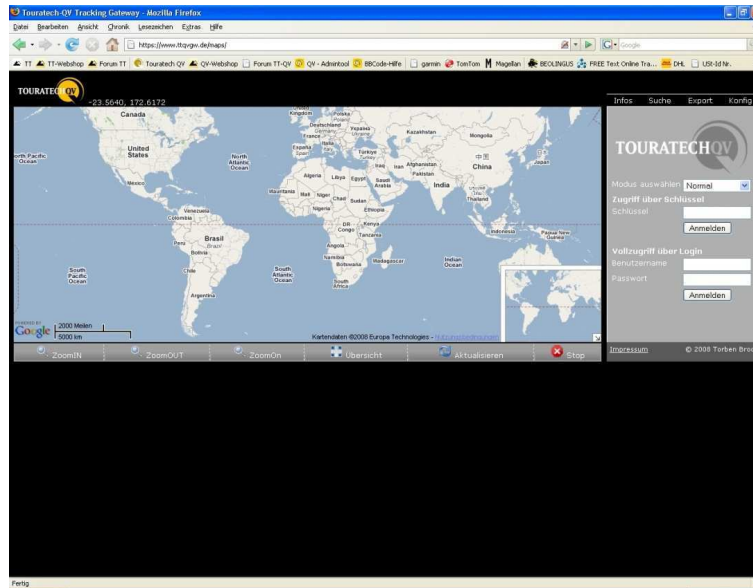


## Use of the Touratech Webgateway with an Internet browser

In order to visualize the positions in your webgateway account please proceed as follows:

### 1. Open your Webbrowser

Access the following URL: [www.ttqvgw.de](http://www.ttqvgw.de)



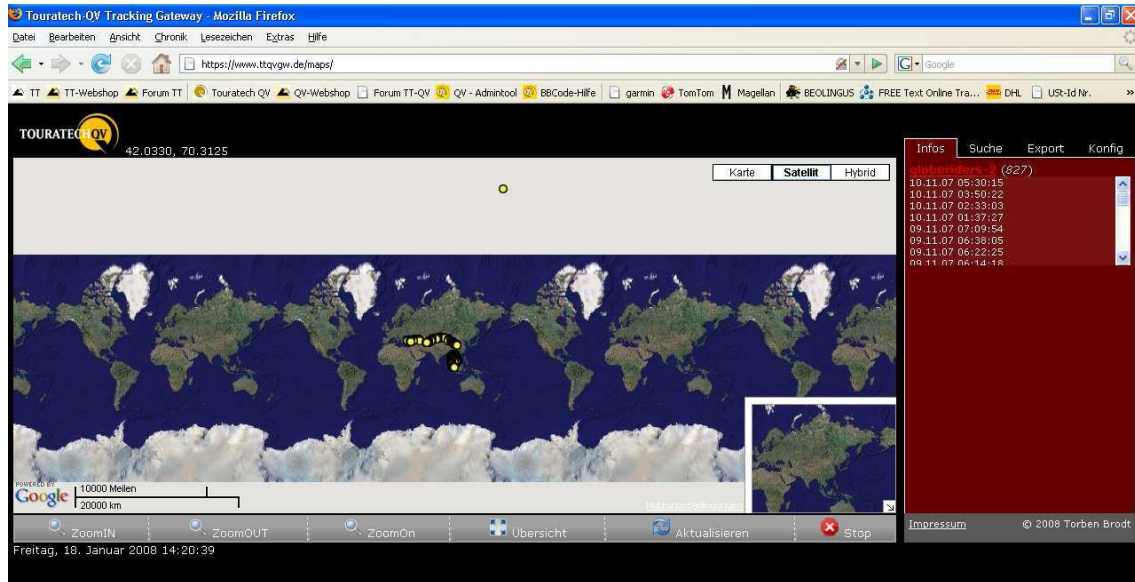
### 2. Choose the operation mode

Choose „normal“ from the „Modus“ pull-down list if you are using GSM-based tracking (e.g. remote-tracking with our *Microtrackers*). For use with our *Satellite-Tracker* usually the „globetrotters“ option is adequate. Please check in by entering your personal account data under „Full Access via Login“. You have received your personal webgateway account data on a separate licence sheet.



### 3. Plotting of positions and data selection

After login, the available data sets are listed in the window to the right and will be plotted in the map window to the left using a standard „Google maps“ – surface.



Using the „globetrotters“ mode the positions will be listed according to their chronology:



Using the „normal“ mode, the data will be pooled according to their date.

Double-clicking will open a chronologic listing of the available positions for that day. In this mode, the plotting of all positions of a given day can be enabled or disabled by clicking on the „O“ or „X“ right of the specified date (shift function). „X“ stands for enabled and „O“ for disabled. Furthermore, each single position can be plotted in the map by a simple click on the data set.

#### 4. Map visualisation

According to the common „Google Maps“ standards, you can choose between the following map options:

- Map type (buttons to the upper right of the map window; those will not appear before you place the cursor inside the map window!): Choose between *Street map* / *Satellite image* / *Hybrid* (= satellite image with street map overlay).



- Zoom (button below the map window)



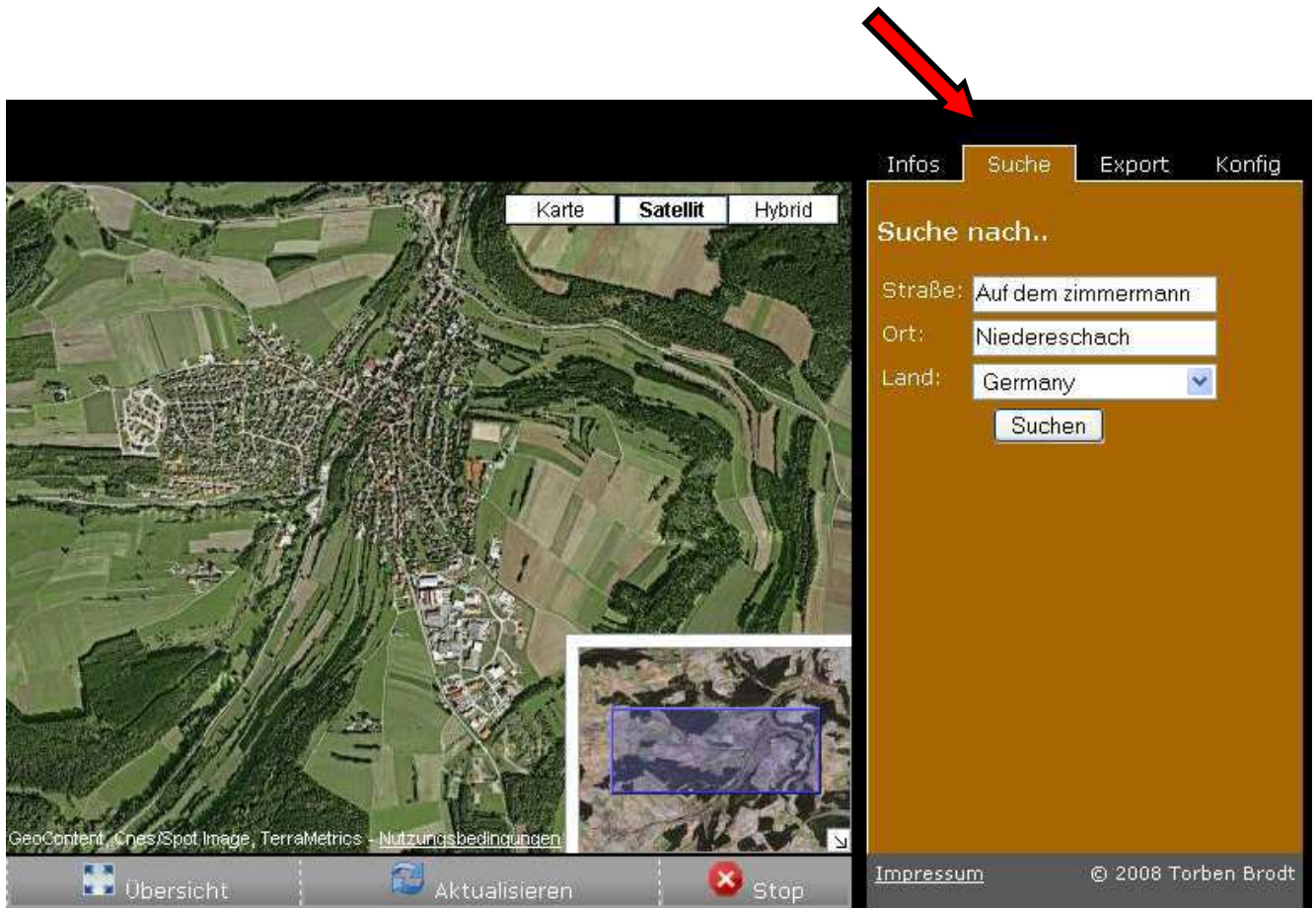
- Map extent: To define a map extent, place the mouse pointer to the upper left corner of interest and define a window by a drag-and-drop operation with the mouse.



- By clicking on a specific position, an info window will open and list all available details for this position with date and coordinates. You will also find an option in this window to zoom to this position at a high zoom scale.

## 5. Google Search function:

Using an implemented search function you can search for addresses and get them plotted in the map window.



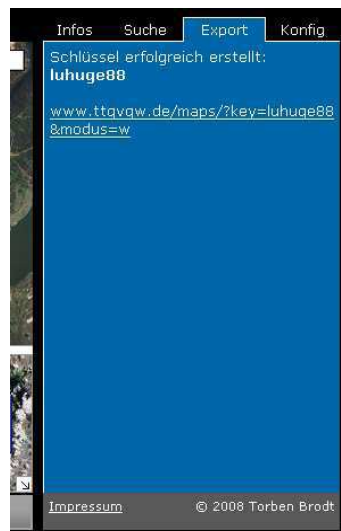
## 6. Export:

Using this function you can create a weblink (URL address) which can be implemented in a website of your choice. In this way you can make certain data public without a need to forward your personal webgateway account data to third persons. For this purpose you can specify which data should be included in the URL link by selecting

- 1) The tracking units to be published (if you should have more than one tracker)
- 2) The time period for every tracker

After finishing your selection options simply press the button “Create key” and you will find the URL link address in the same window. This address can be used to directly access those data without a need for username and password entries; alternatively you can add this link to your personal website or a website of your choice.

The position visualisation and the data selection window will be identical to what you find in your personal webgateway account but – of course – restricted to the data which you defined for public use.



## 7. Konfig:

In this menu you can configure in which map style your webgateway account should start after login.

